

## Location

<b>LOCATION:</b>	Highway 93 & Cartee Rd
<b>COMMUNITY:</b>	Liberty
<b>COUNTY:</b>	Pickens County
<b>STATE:</b>	South Carolina

## Description

<b>AVAILABLE:</b>	39 Acre(s)
<b>SITE SIZE:</b>	
<b>SC CERTIFICATION:</b>	None
<b>MIN. DIVISIBLE EXACT:</b>	39 Acre(s)
<b>MIN. DIVISIBLE:</b>	39 Acre(s)
<b>SITE IMPROVEMENTS:</b>	Partially Cleared
<b>ELEVATION MINIMUM:</b>	ft.
<b>ELEVATION MAXIMUM:</b>	ft.
<b><u>DUE DILIGENCE:</u></b>	
Cultural Resource Identification Survey:	Not Completed
Boundary Survey:	Not Completed
Protected Species Assessment:	Not Completed
Preliminary Geotechnical Exploration:	Not Completed
Phase I Environmental Site Assessment:	Not Completed
Wetlands Delineation:	Not Completed
Topographical Survey:	Not Completed

## Zoning and Land Use

<b>ZONING:</b>	No assigned zoning
<b>TAX MAP ID:</b>	[4098-00-73-4856]
<b>LAND USE:</b>	North: Light Industrial East: Undeveloped Land South: Undeveloped Land West: Undeveloped Land

## Sales

<b>FOR LEASE:</b>	No
<b>FOR SALE:</b>	Yes
<b>SALE PRICE:</b>	\$ 30,000.00



## Utilities

<b>WATER:</b>	Easley-Central Water District
<b>SEWER:</b>	Service Not Available
<b>GAS:</b>	Fort Hill Natural Gas
<b>ELECTRICITY:</b>	Duke Energy

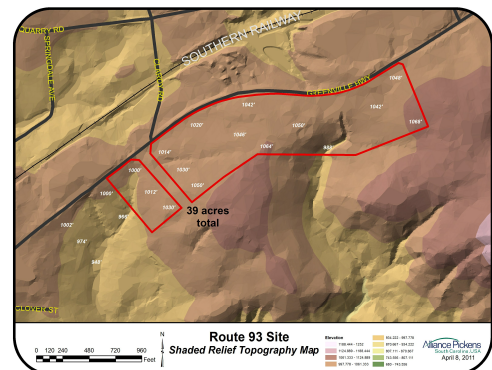
## Transportation and Access

<b>INTERSTATE:</b>	I-85 14.00 Mile(s)
<b>HIGHWAY:</b>	Old Greenville Highway - SC Highway 93 2 Lanes
<b>INT'L AIRPORT:</b>	Charlotte Douglas Intl Airport 118 Mile(s)
<b>DOMESTIC AIRPORT:</b>	Greenville-Spartanburg International 29 Mile(s)
<b>PORT:</b>	Charleston 229 Mile(s)
<b>INTERMODAL:</b>	CSX Charlotte 116 Mile(s)

## Comments

## Contact Information

<b>NAME:</b>	Ray Farley
<b>TITLE:</b>	Executive Director
<b>EMAIL:</b>	rfarley@alliancepickens.com
<b>PHONE:</b>	864.898.2450
<b>WEBSITE:</b>	www.alliancepickens.com



No warranty or representation, expressed or implied, is made regarding the accuracy of this data, and same is subject to omissions, errors, and changes. This report is in accordance with the terms and agreements of the InfoMentum License Agreement. This information was compiled by the SC Dept. of Commerce, the SC Appalachian Council of Governments and the Alliance Pickens.