

FOR SALE

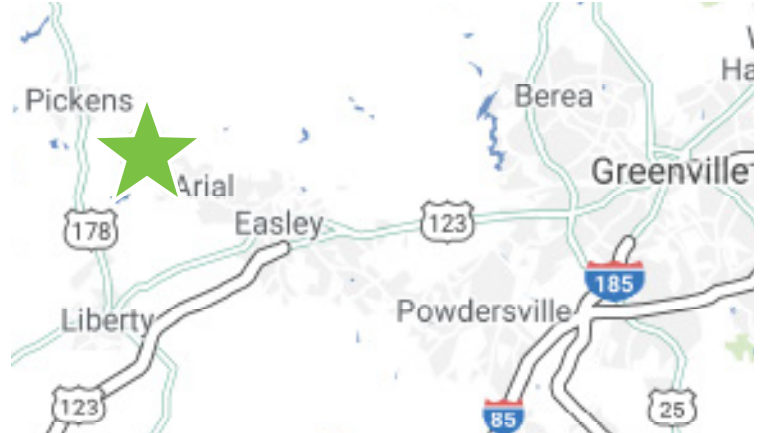
HWY 8 + WILSON WAY

SITE #2009
Pickens, SC



PROPERTY INFORMATION

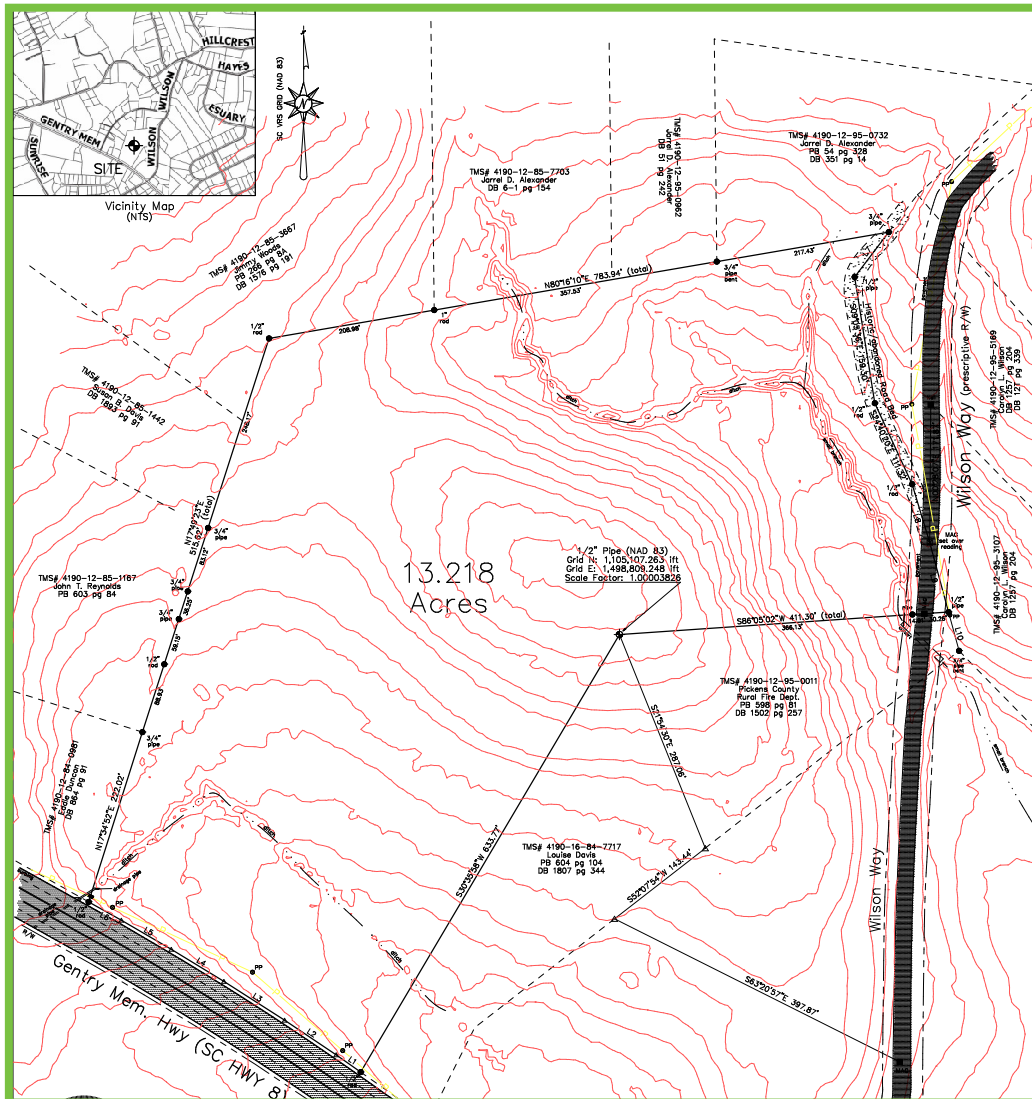
- + ± 13.218 acres of vacant land for sale
- + Approx 405 feet of frontage on Hwy 8 (Gentry Memorial Hwy), and 130 feet on Wilson Way
- + Great residential or industrial development site between Downtown Easley & Downtown Pickens
- + Public water available, no sewer
- + Asking Price: \$250,000 (\$18,914 per acre)



www.cbre.us/greenville

CBRE

HWY 8 + WILSON WAY



CONTACT US

JUSTIN HIRSCH

First Vice President
+1 864 527 6069
justin.hirsch@cbre.com

© 2020 CBRE, Inc. All rights reserved. This information has been obtained from sources believed reliable, but has not been verified for accuracy or completeness. You should conduct a careful, independent investigation of the property and verify all information. Any reliance on this information is solely at your own risk. CBRE and the CBRE logo are service marks of CBRE, Inc. All other marks displayed on this document are the property of their respective owners, and the use of such logos does not imply any affiliation with or endorsement of CBRE. Photos herein are the property of their respective owners. Use of these images without the express written consent of the owner is prohibited.

www.cbre.us/greenville

CBRE